

# CANDY MECHANICS GIFTING GUIDE 2020



**CANDY MECHANICS**

Magical Chocolate Gifts  
[candymechanics.com](http://candymechanics.com)

## HELLO

Here at Candy Mechanics we have one aim - to create the ultimate in uniquely personalised chocolate gifts sure to leave your clients truly amazed.

Made from luxury Belgian chocolate, each product is individually engraved to create a special gift that will astound and delight.

**Tailored to you, made magical  
by Candy Mechanics.**

# CANDY CARDS

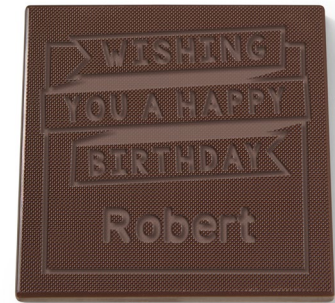
Choose from a range of templates or create your own unique design.

Create bespoke chocolate gifts for every occasion.

We pride ourselves on the fact that every single gift can be individually customised.

Our team will work with you to create your perfectly personalised gifts using our innovative carving technology. With just a list of names, we can get to work engraving your message into each bar.

Be inspired by our sweet designs...



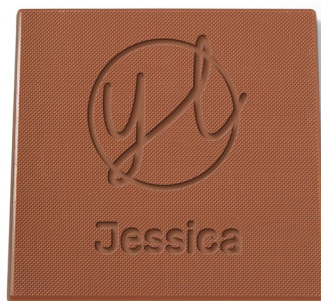
## PERSONAL BIRTHDAY WISHES

Reward clients with a delicious chocolate treat. Personalise with individual names and messages.



## A SWEET THANK YOU

Create a smile and show your appreciation with a thank you that is bound to delight.



## A UNIQUE TOUCH

Your logo in chocolate! Add names and even messages, perfect for giveaways or place settings at dinners and conferences.



## A DELICIOUS WELCOME

Create memorable moments and positive experiences with a gift they are bound to love.

---

See page \* for information on our range of luxury belgian chocolate

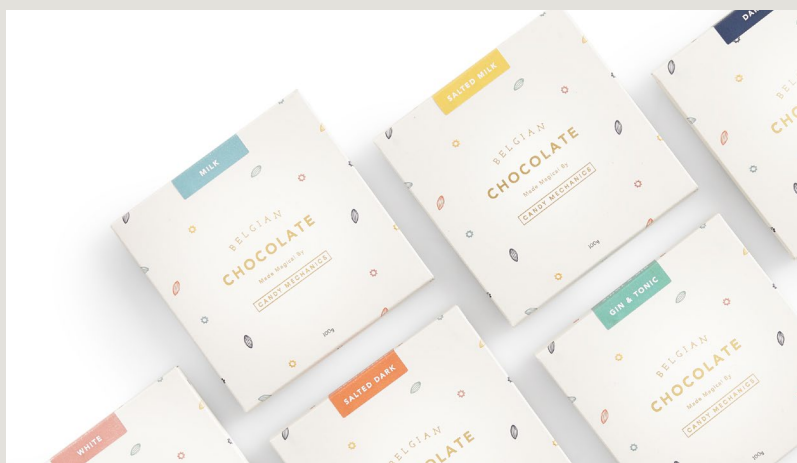
# CANDY CARD PACKAGING OPTIONS

First impressions are everything. Our chocolate cards guarantee that wow factor from the moment they are received.

Candy Mechanics' luxury wrap is made from 100% recycled materials with a gold foiled front and embossed pattern.

Each wrap comes with a separate message slip where we can print a personalised note or leave blank for you to add your own special message.

**Our wrap is included on all costings.**



## BESPOKE PACKAGING OPTIONS

Co-brand your packaging for an extra layer of personalisation.

We can work with you to create simple wraps or bespoke packaging for your gifts.

**Bespoke half wrap packaging available on orders over 100 units.**

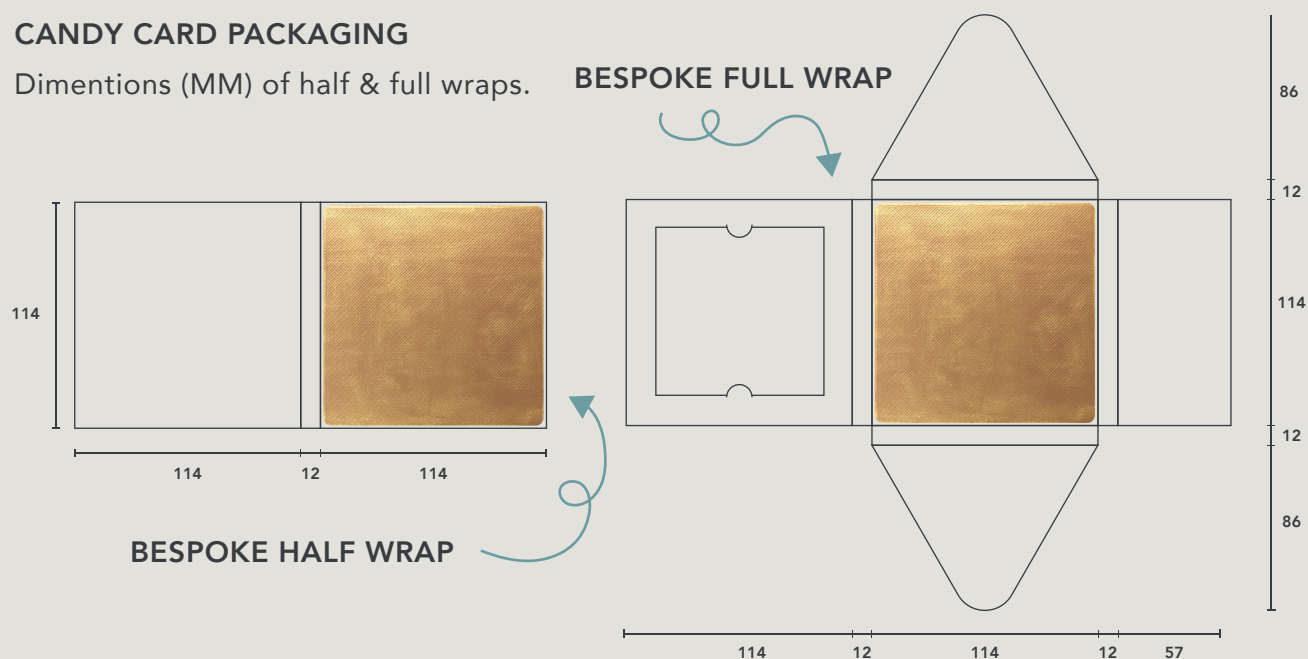
**Bespoke full wrap packaging available on orders over 1000 units.**



# GOOD TO KNOW

## CANDY CARD PACKAGING

Dimensions (MM) of half & full wraps.



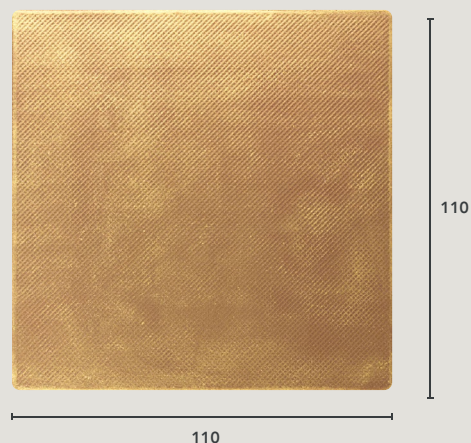
## CANDY CARD SIZE

WIDTH: 110 mm

HEIGHT: 110 mm

DEPTH: 7 mm

WEIGHT: 100g



CANDY CARD UNITS	CM FULL WRAP PPU EX.VAT
50 - 100	£8.50
100 - 500	£8.00
500 - 2,000	£7.50
2,000+	£6.50

Available in both CM packaging & bespoke 1/2 wrap.

Other options available for packaging, additional costs are applicable - please enquire.

- Gold Foiling
- Special paper stock for packaging



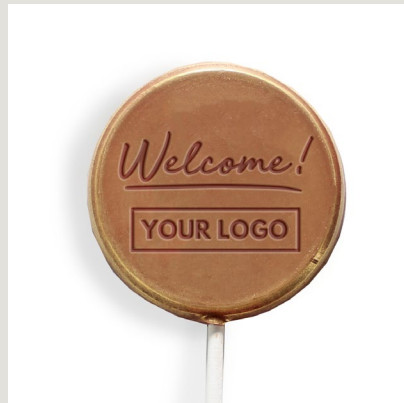
## \*NEW\* YOURPOPS

A sleek chocolate lollipop engraved with your logo and a personal message or name. Perfect as a tasty gift or delicious reward.

### Create your unique engraved treats.

Yourpops offer an effective cost solution for high volume orders. Made from Belgian chocolate the creation process uses our innovative carving technology, which still allows for each gift to be uniquely personalised.

At a delicious 6 cm, these decadent delights are set to deliver smiles to all who receive them. Talk to our team to design your own bespoke design.



### SWEET GIFTS

The perfect small treat to celebrate Christmas. Make it bespoke with individual names and messages.



### A PERSONAL WELCOME

Create positive experiences and welcome new employees and clients with chocolate!



### A MEMORABLE MOMENT

Do things differently and create unforgettable giveaways.



### A SPECIAL THANK YOU

Show your gratitude and say a special thank you in chocolate!

---

See page 9 for information on our range of luxury belgian chocolate

# YOURPOP PACKAGING OPTIONS

Create a buzz with our luxury packaging or steal the show and create your own branded design.

Candy Mechanics brightly coloured tags are perfect for goodie bags, giveaways and thank yous.

Made from 100% recycled materials the Yourpop is completely secured with a golden twist tie.

**Our tags are included on all costings**



## BESPOKE PACKAGING OPTIONS

Get the extra wow factor with co-branded tags. We will supply you with a simple template to add your logo or even a personal message.

**Bespoke swing tags available on orders over 100 units.**



# GOOD TO KNOW

## YOURPOP PACKAGING

Dimensions (MM) of Yourpop Swing Tag

A template for the bespoke swing tag will be provided by Candy Mechanics

Allergen information displayed on the reverse of the swing tag



### BACK



### FRONT



70

44

## YOURPOP SIZE

WIDTH:	65 mm
HEIGHT:	65 mm (150 mm with stick)
DEPTH:	7 mm
WEIGHT:	30g



65

65

YOURPOP UNITS	CM BRANDING PPU EX.VAT	BESPOKE BRANDING PPU EX.VAT
100 - 250	£3.60	£3.85
251 - 500	£3.55	£3.75
501 - 1000	£3.50	£3.55
1,000 - 2,000	£3.25	£3.25
2000+	£3.00	£3.00



# ABOUT THE CHOCOLATE

## **Melt in the Mouth Milk Chocolate**

Smooth and creamy milk chocolate that's a firm favourite with all ages. Hand-made in the UK from delicious Belgian chocolate.

**Ingredients:** Sugar, Cocoa Butter, Whole **Milk** Powder, Cocoa Mass, Whey Powder (**Milk**), Emulsifier (**Soya** Lecithin), Natural Vanilla Flavour. Minimum Cocoa Solids 34%, Minimum Milk Solids 22%.

## **Luxurious Dark Chocolate - Vegan Friendly!**

Luxurious and decadent dark chocolate perfect for those who like a deep and rich flavour. This is the perfect choice for Vegans however is made in a factory that handles dairy products.

**Ingredients:** Cocoa Mass, Sugar, Cocoa Butter, Emulsifier (**Soya** Lecithin). Minimum Cocoa Solids 56%.

## **Smooth White Chocolate**

Heavenly sweet with a light creamy finish white chocolate. This is a perfect match for any sweet tooth! Hand-made in the UK from delicious Belgian chocolate.

**Ingredients:** Sugar, Cocoa Butter, Whole **Milk** Powder, Skimmed **Milk** Powder, Emulsifier (**Soya** Lecithin), Natural Vanilla Flavour. Minimum Cocoa Solids 28% Minimum Milk Solids 25%.

## **Satisfyingly Salted Milk Chocolate**

Velvety smooth and creamy milk chocolate delicately balanced with the finest Anglesea Sea Salt. A light yet deliciously salted finish. Hand-made in the UK from delicious Belgian chocolate to our chief chocolatier Will's own recipe.

**Ingredients:** Sugar, Cocoa Butter, Whole **Milk** Powder, Emulsifier (**Soya** Lecithin), Natural Vanilla Flavour, Anglesey Sea Salt. Minimum Cocoa Solids 34% Minimum Milk Solids 22%.

## **Satisfyingly Salted Dark Chocolate - Vegan Friendly!**

Rich and luxurious dark chocolate delicately balanced with the finest Anglesea Sea Salt. Deep flavour with a wonderful light salted finish. Hand-made in the UK from delicious Belgian chocolate to our chief chocolatier Will's own recipe.

**Ingredients:** Cocoa Mass, Sugar, Cocoa Butter, Emulsifier (**Soya** Lecithin), Natural Vanilla Flavour, Anglesey Sea Salt. Minimum Cocoa Solids 56%.

The background is a light gray color with a repeating pattern of stylized gears and almonds. The gears are in shades of yellow, orange, red, and dark blue. The almonds are in shades of red, teal, and yellow. They are scattered across the entire page.

## SAY HELLO

Contact us to discuss your  
gifting needs.

Give us a call:  
**0207 403 1094**

Or drop us an email:  
**[hello@candymechanics.com](mailto:hello@candymechanics.com)**

**CANDY MECHANICS**

Magical Chocolate Gifts  
[candymechanics.com](http://candymechanics.com)